

## Chickpea Varieties:

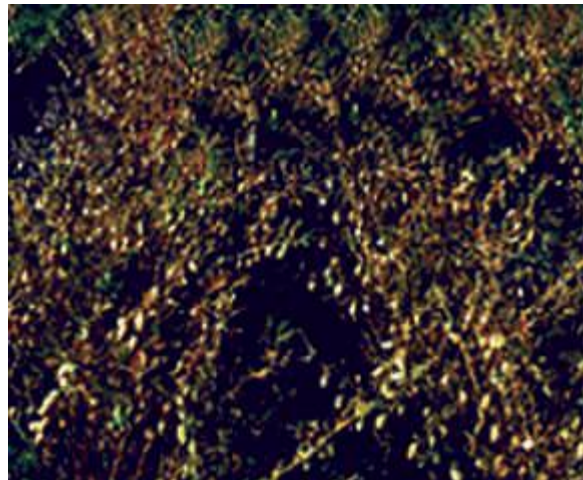
### 1. Hyposola:

This is a high yielding variety, released in 1981. Plant height ranges between 40-45 cm. Maximum seed yield potential 2.2 tons/ha (av. 1.5 tons/ha). Its seeds contain higher protein (24.2%). It matures in 110-115 days i. e., 10 days early maturing than Binasola-2.



### 2. Binasola-2:

This is also a high yielding chickpea variety, released in 1998. Maximum seed yield is about 2.2 tons/ha (av. 1.6 tons/ha). Plants are taller (50-60 cm) than Hyposola. Maturity period ranges between 120-130 days. Seed size is larger than Hyposola. This variety is specially suitable for cultivation across the dry areas, particularly in Barind tract.



### 3. Binasola-3:

This is an early maturing high yielding variety, released in 2001. Plant height varies from 45-55 cm. Maturity period ranges between 115-120 days. Maximum yield potential is 2.3 tons/ha (av. 1.6 tons/ha.).



#### **4. Binasola-4:**

This is another high yielding chickpea variety, released in 2001. Plant height varies from 48-60 cm. Maturity period ranges between 120-125 days. Maximum yield potential is 2.5 tons/ha (av. 1.7 tons/ha). It has bright seed coat colour.

